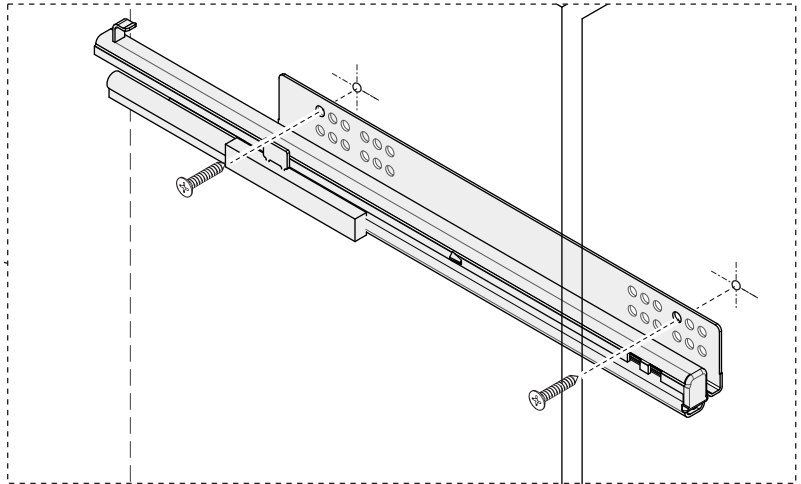
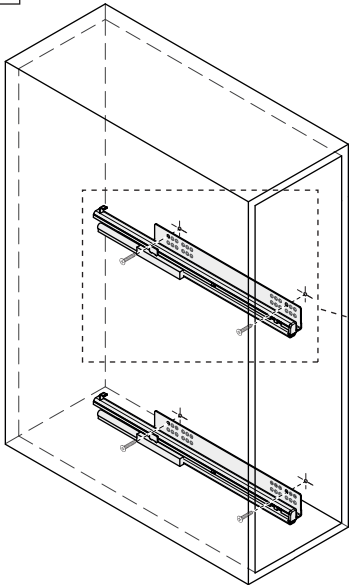


2

ø4x16mm



x4

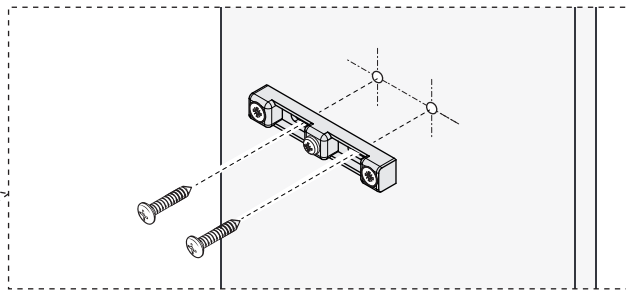
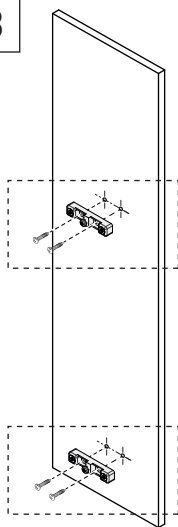


3

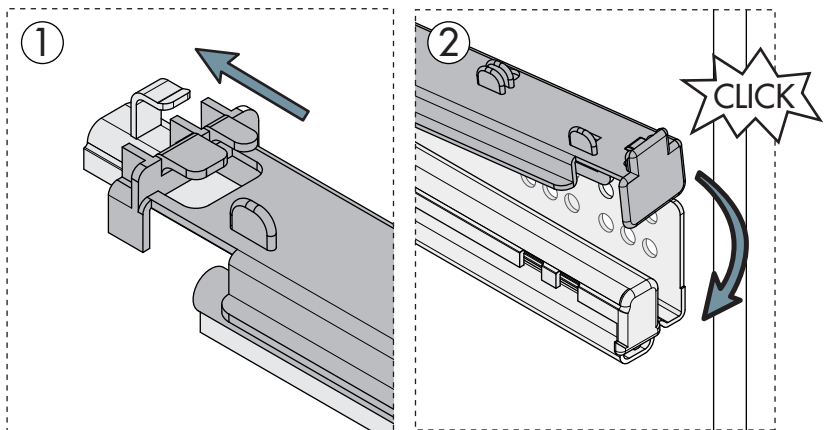
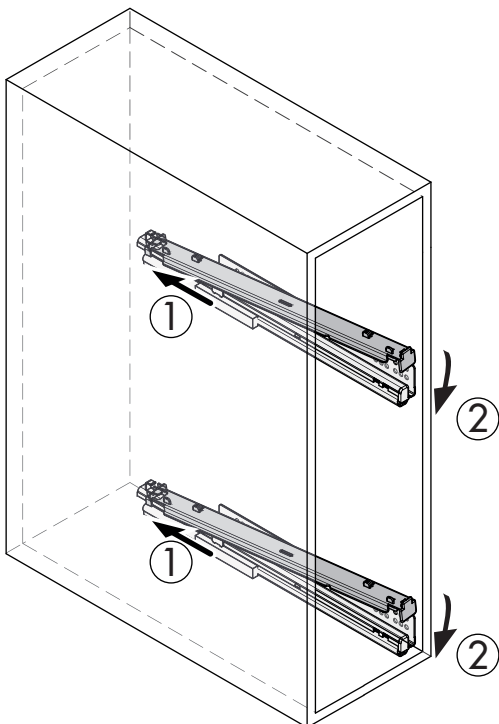
ø4x16mm



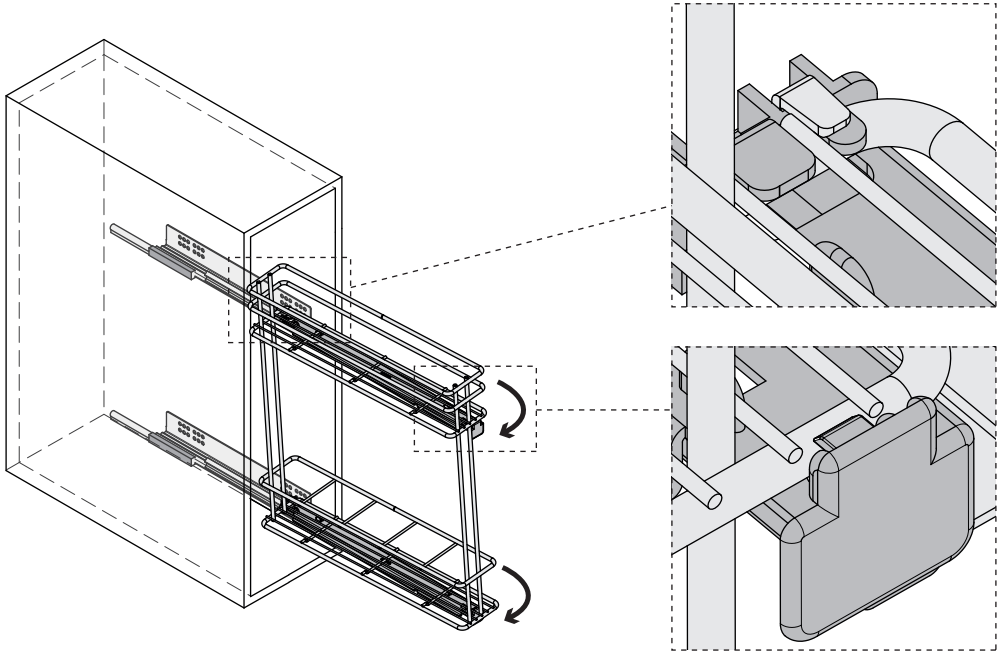
x4



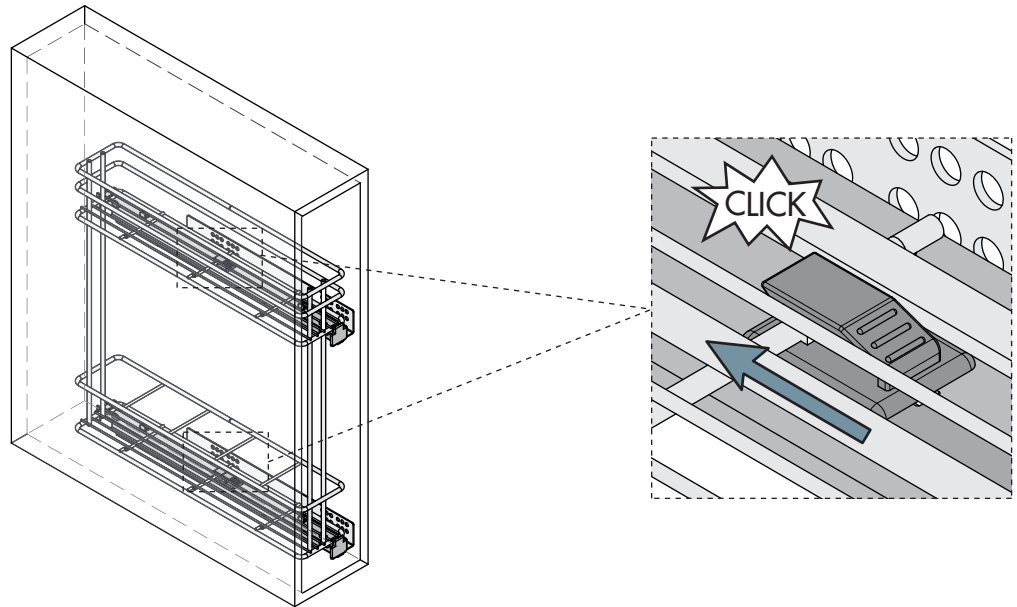
4



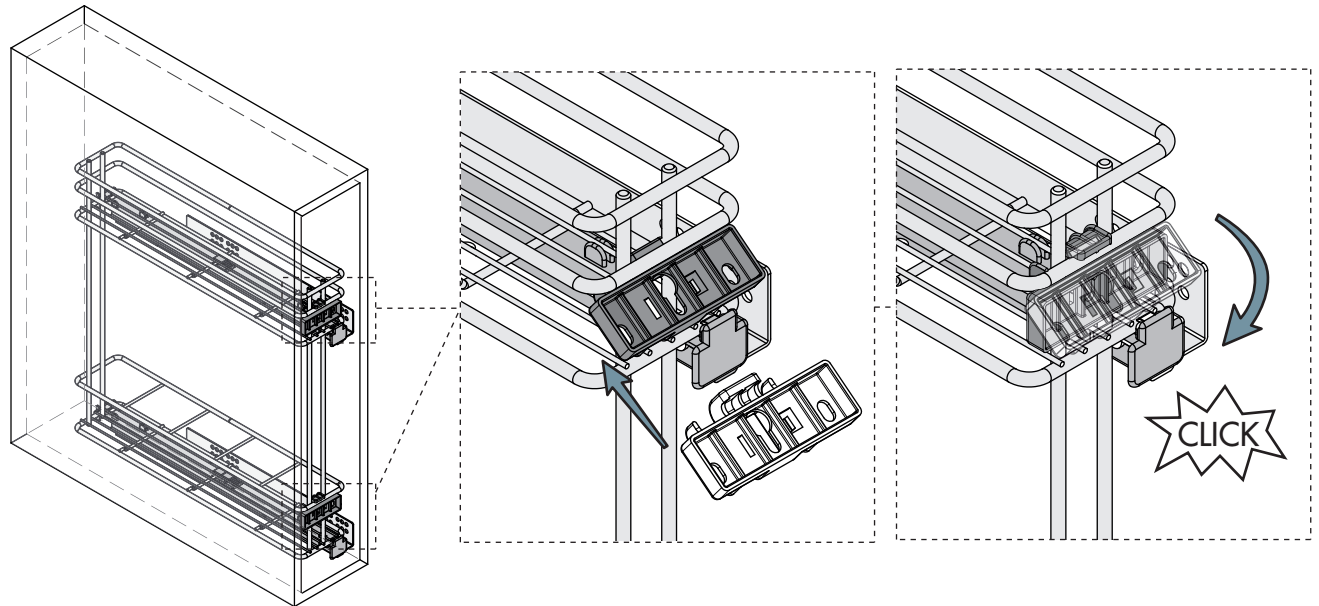
5



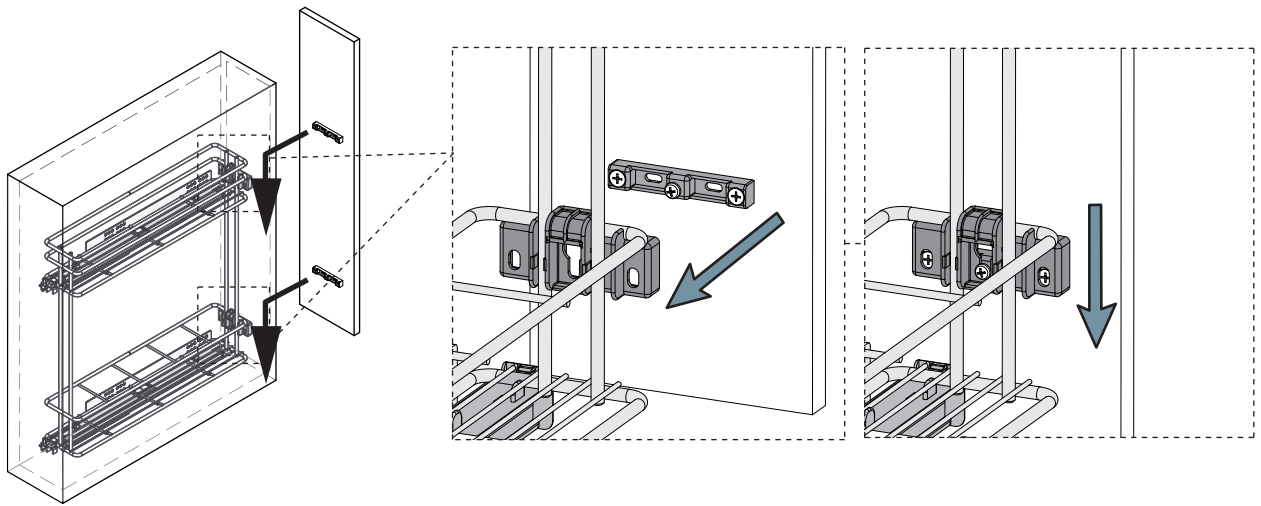
6



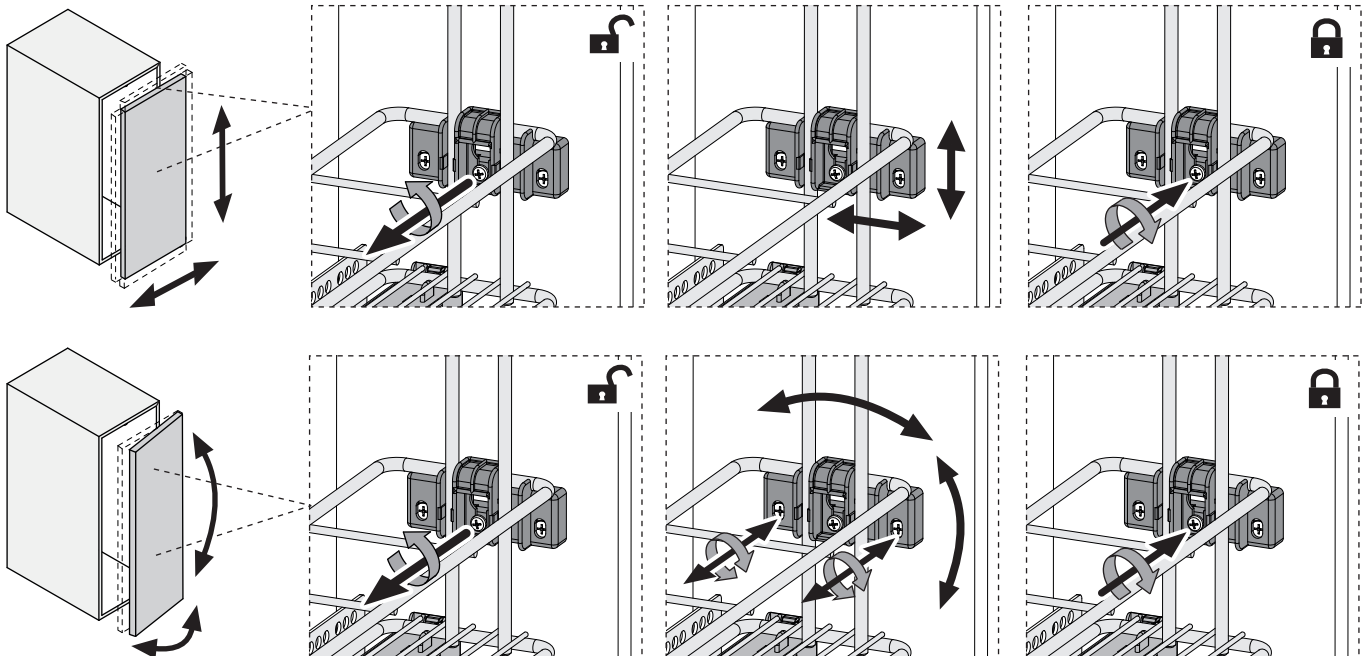
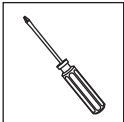
7



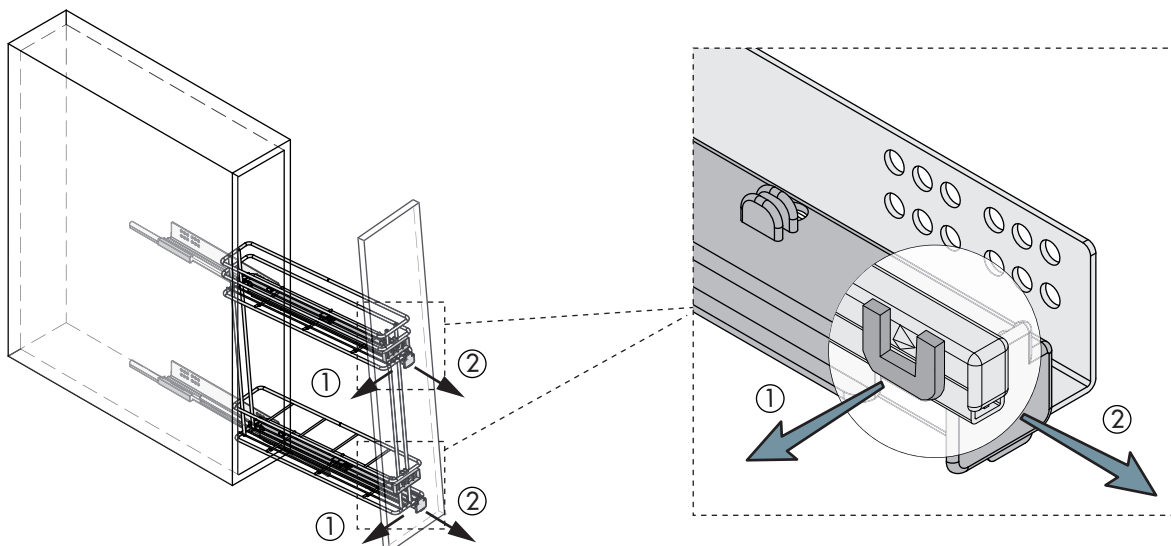
8

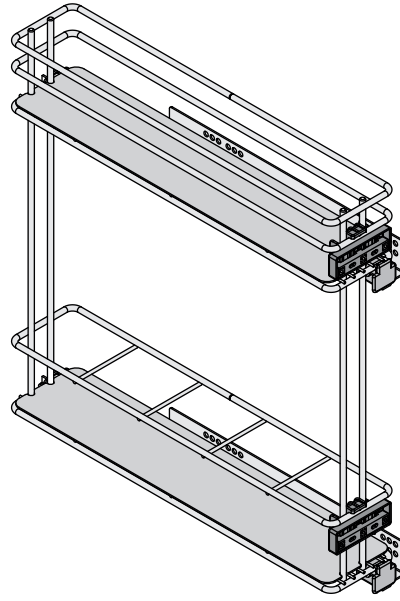
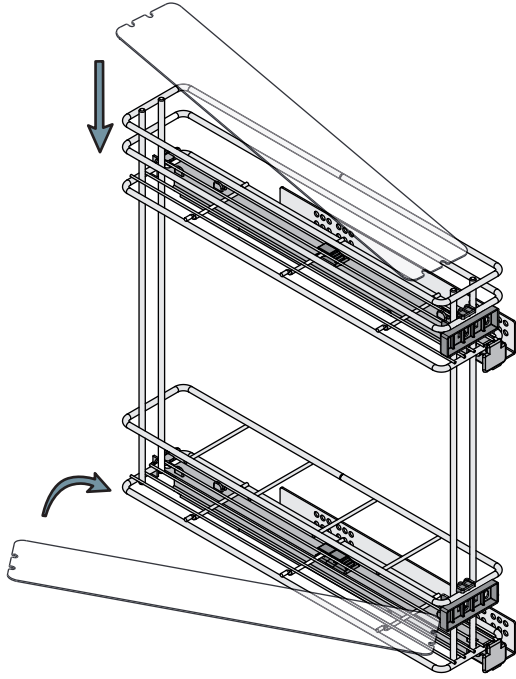
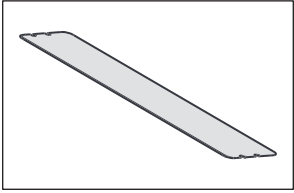


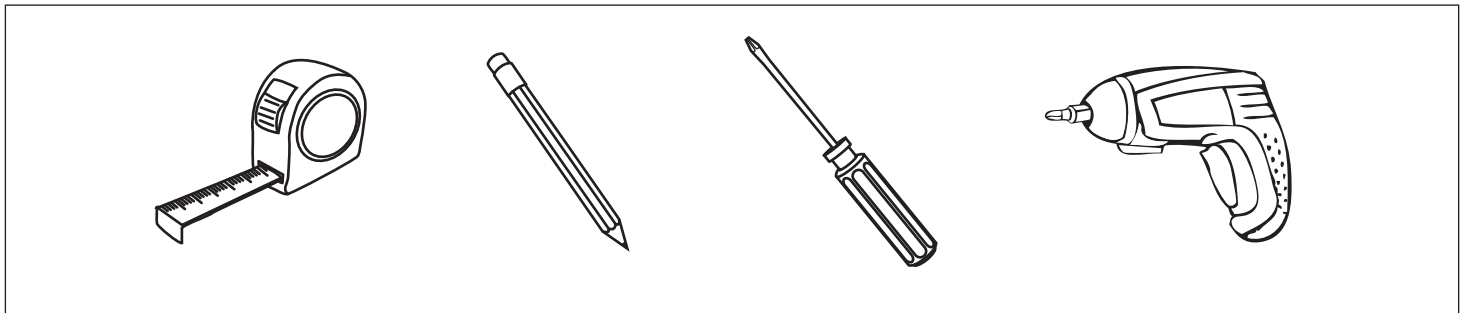
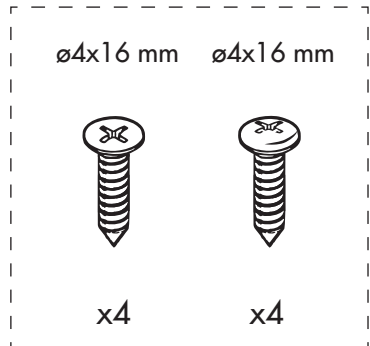
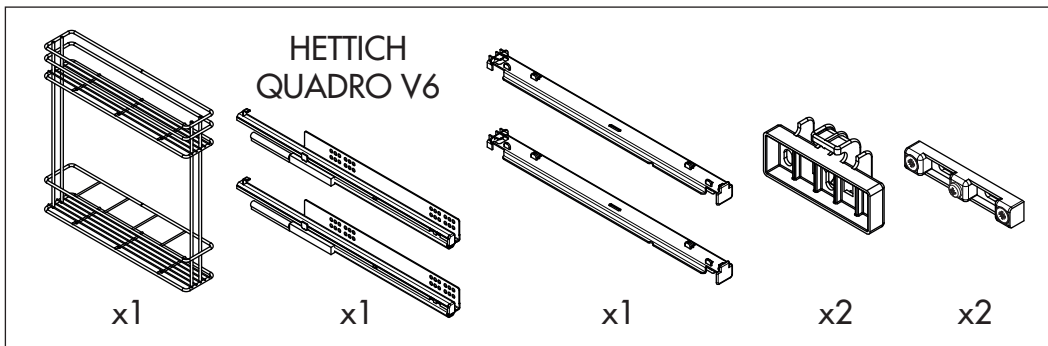
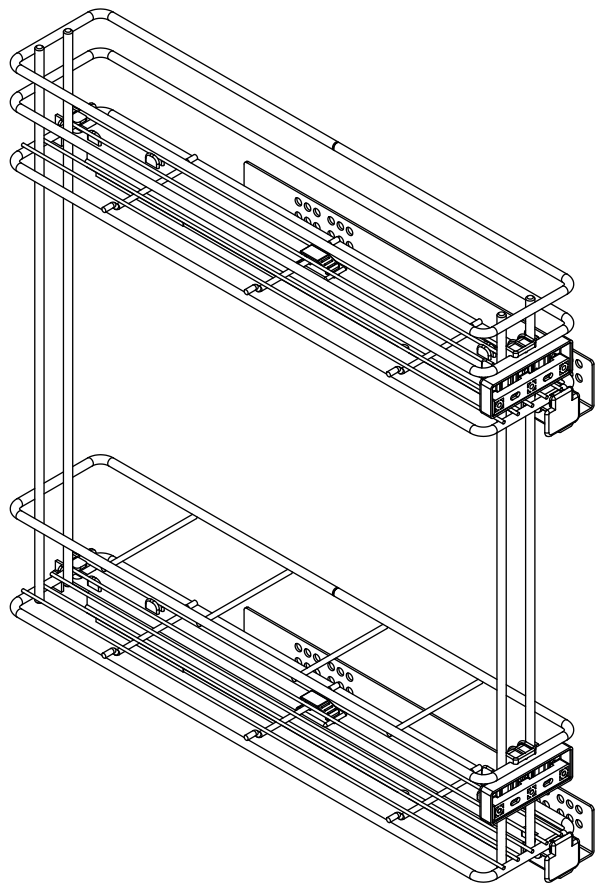
9

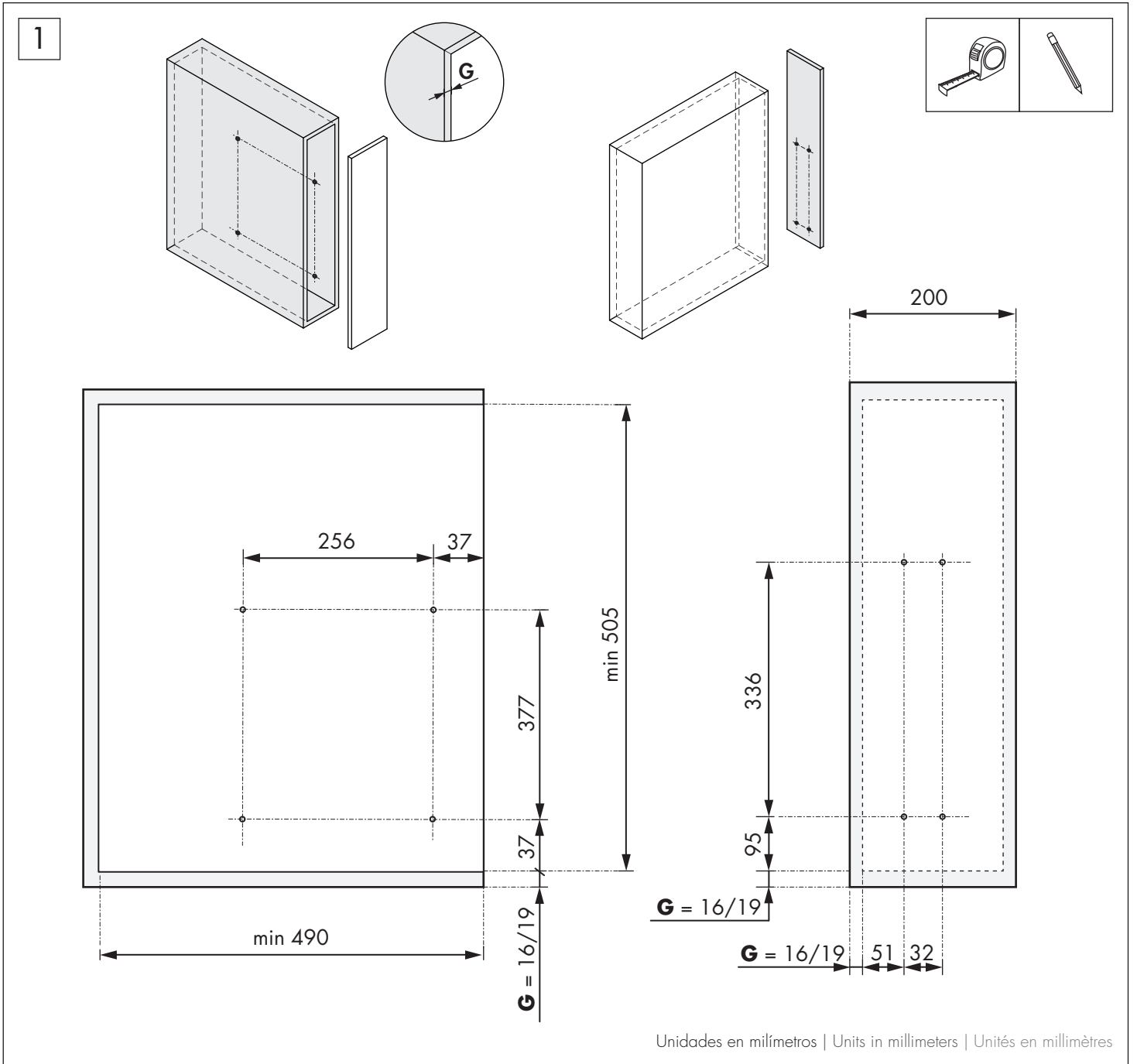
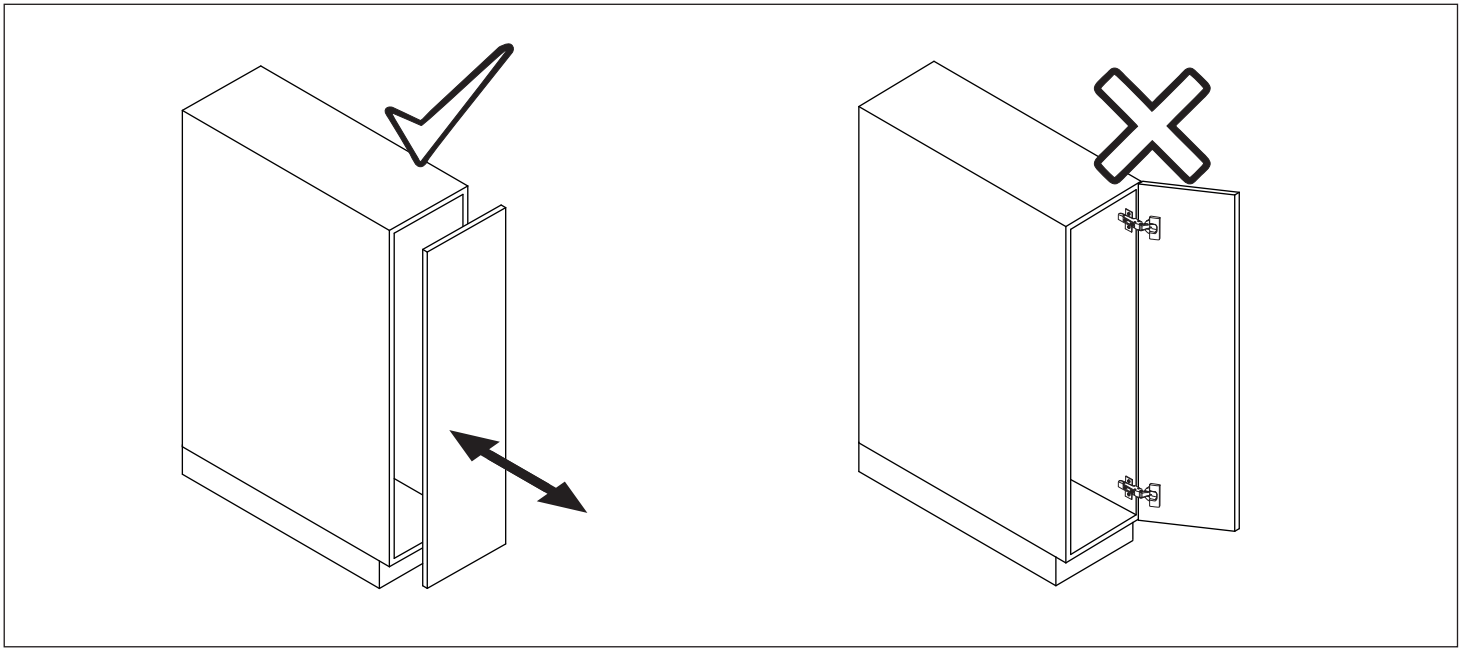


i Desmontaje | Dismount | Démontage







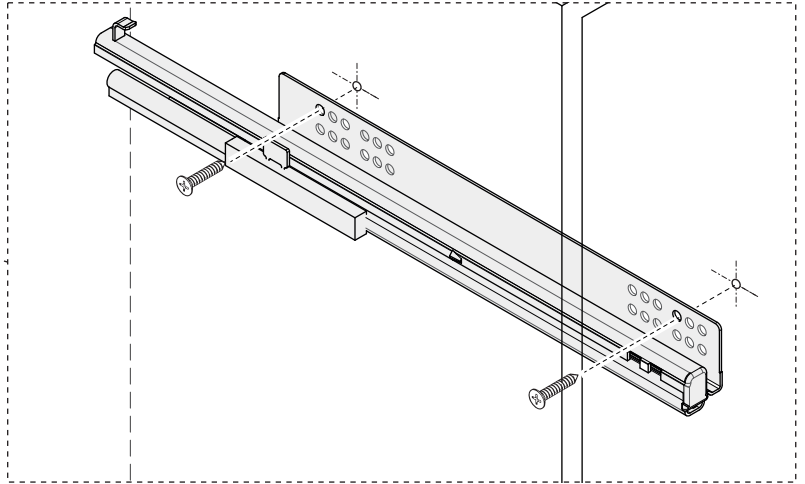
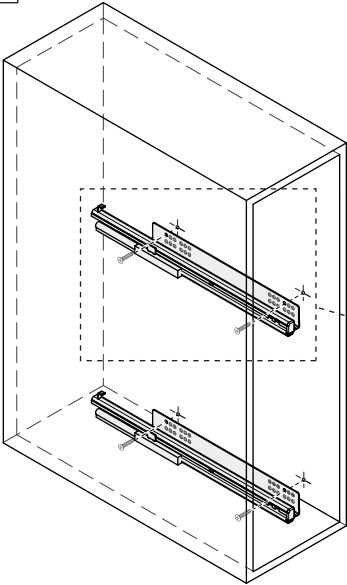


2

ø4x16mm



x4

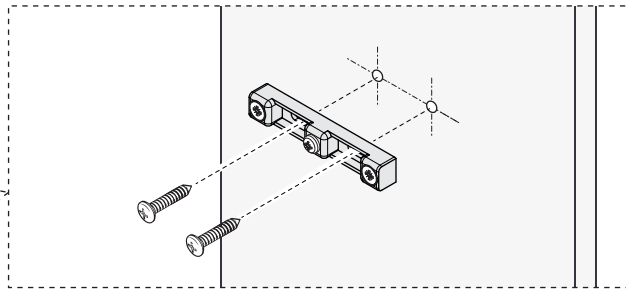
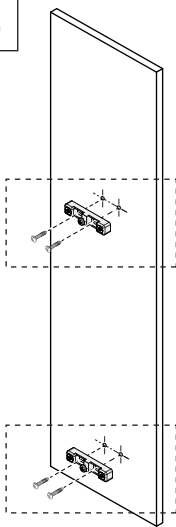


3

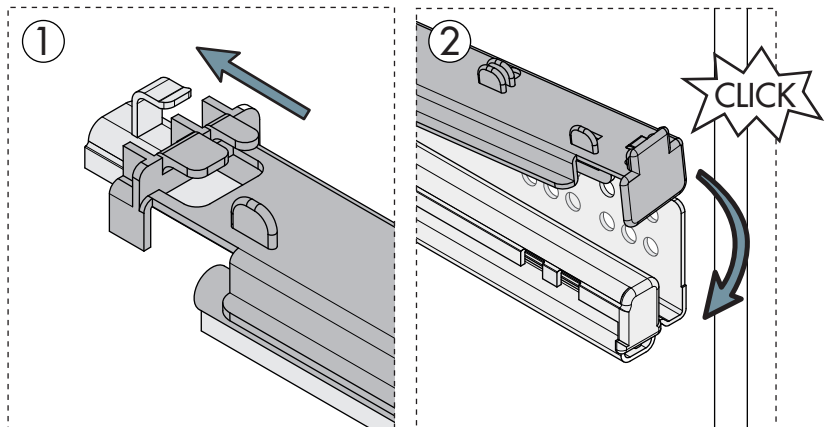
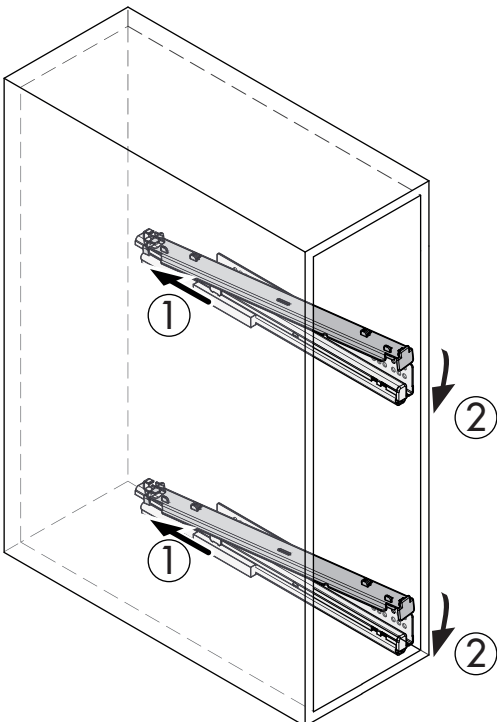
ø4x16mm



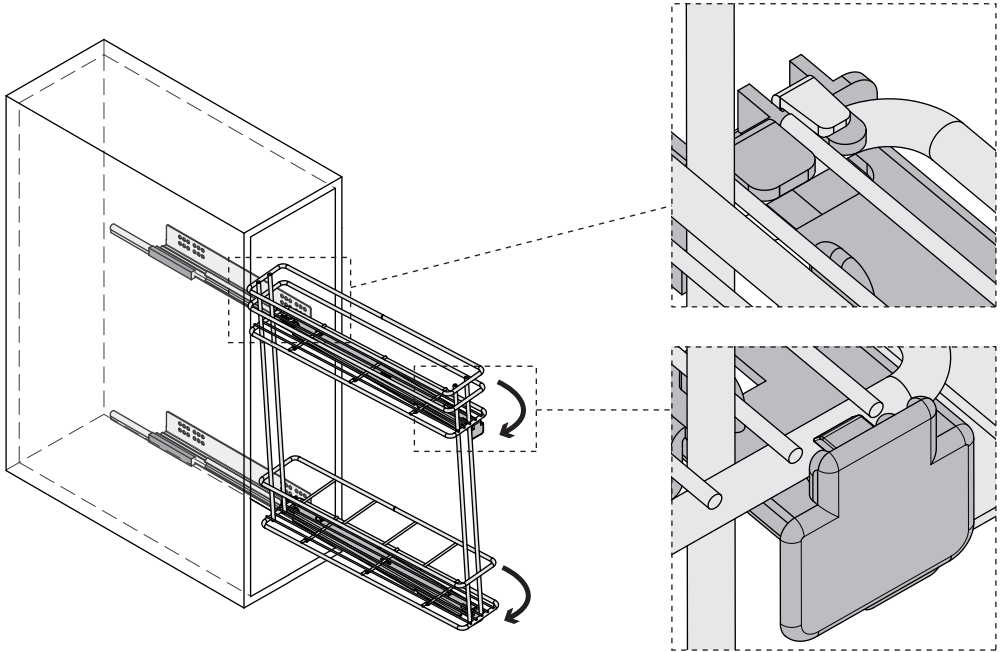
x4



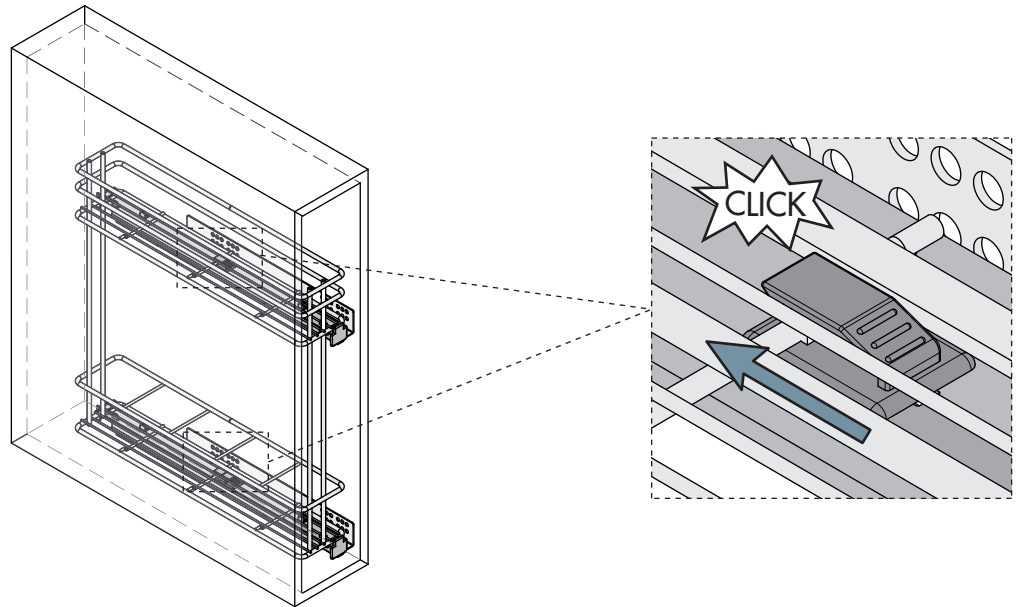
4



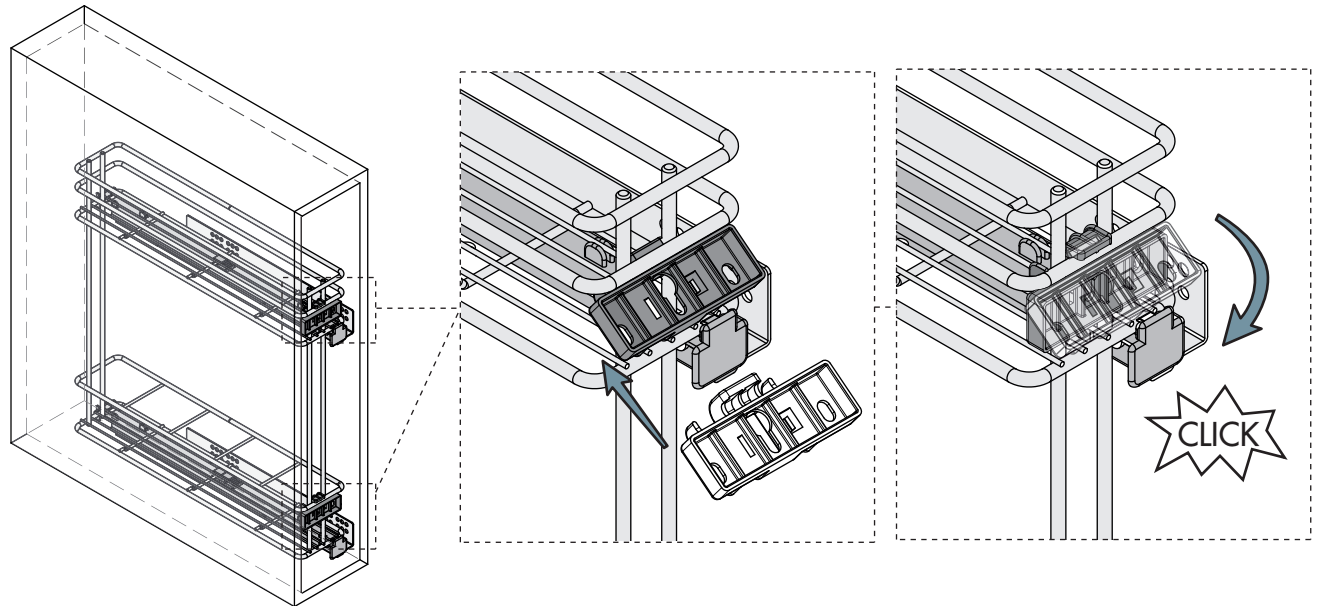
5



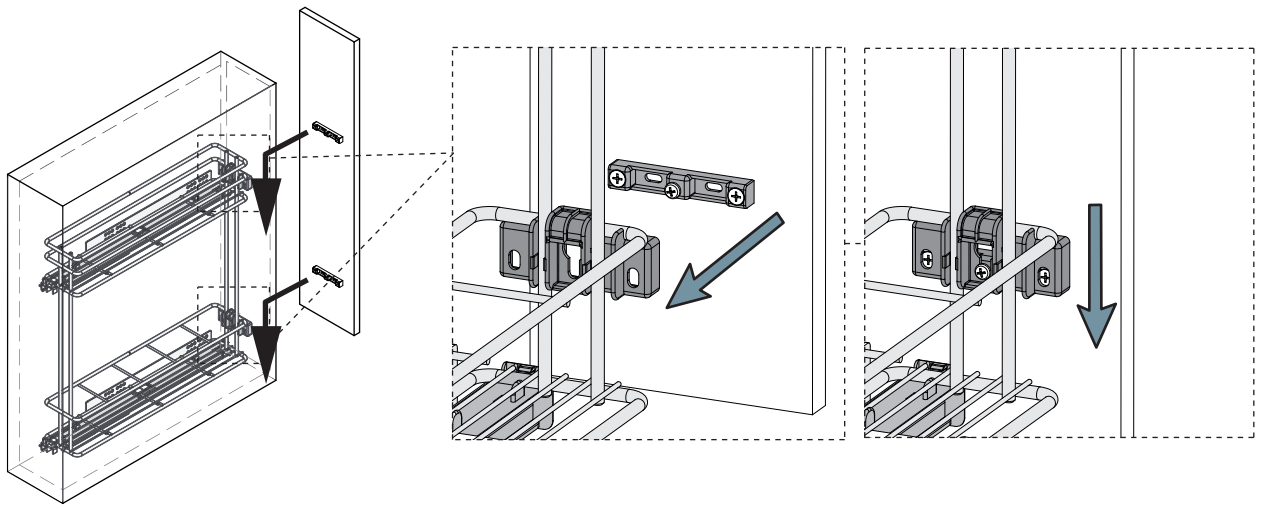
6



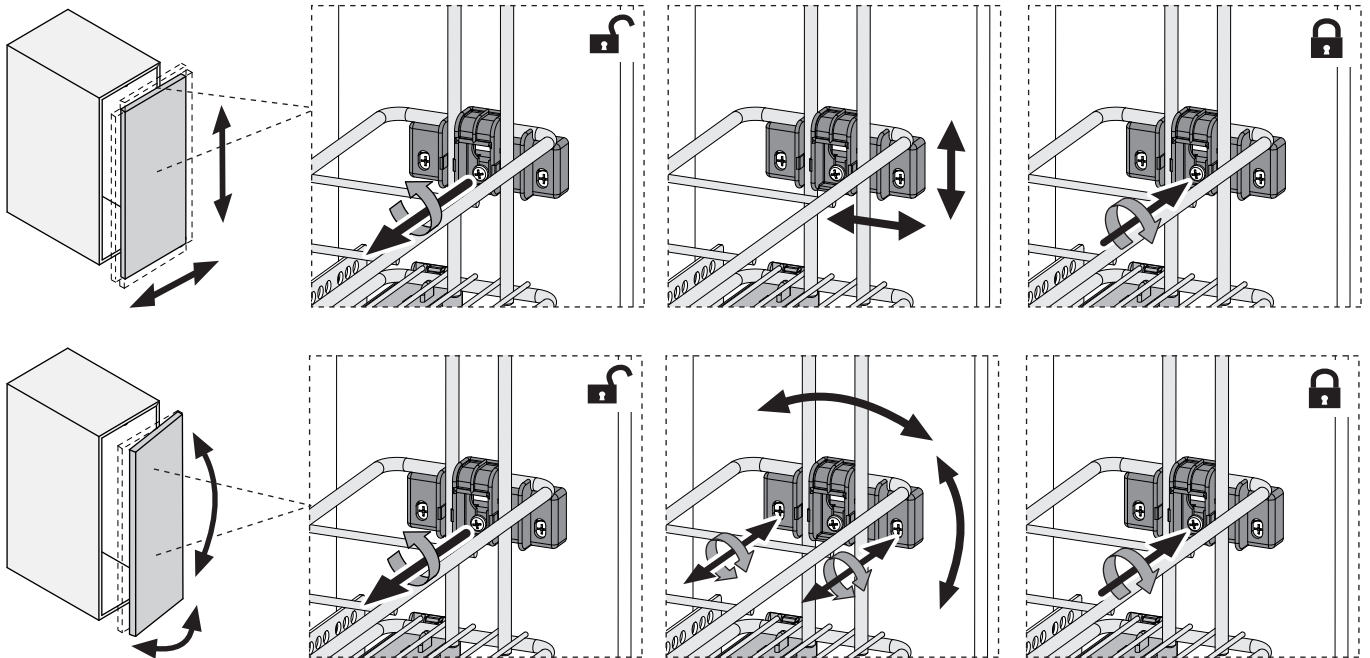
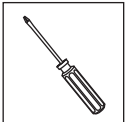
7



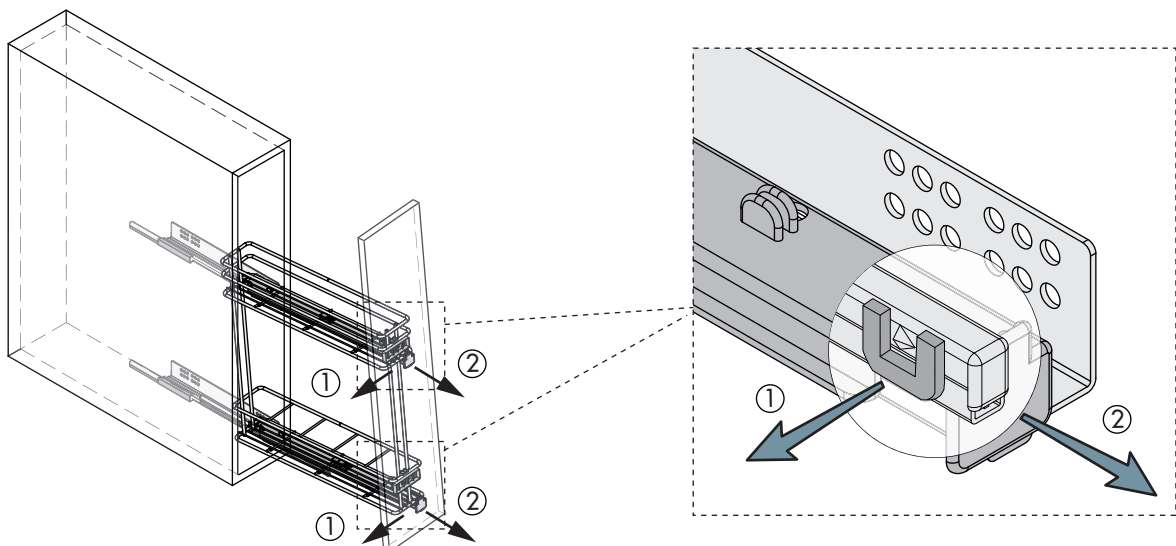
8

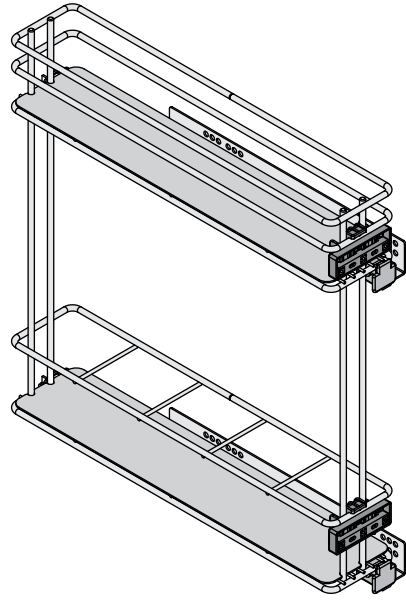
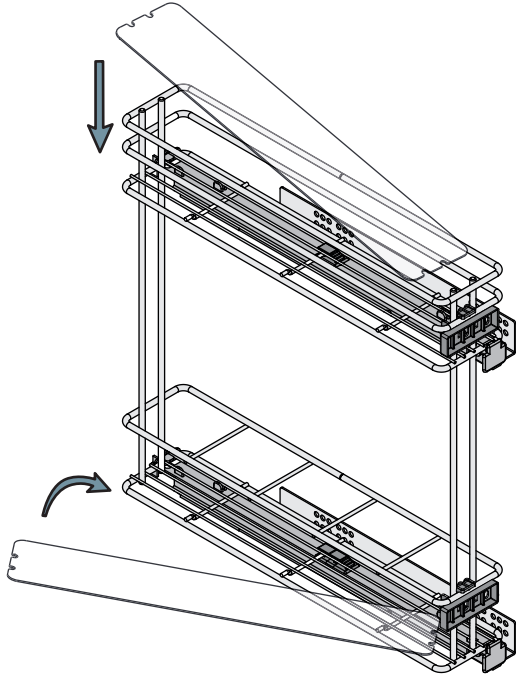
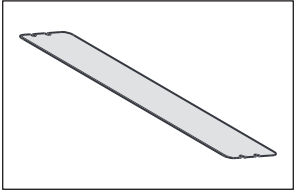


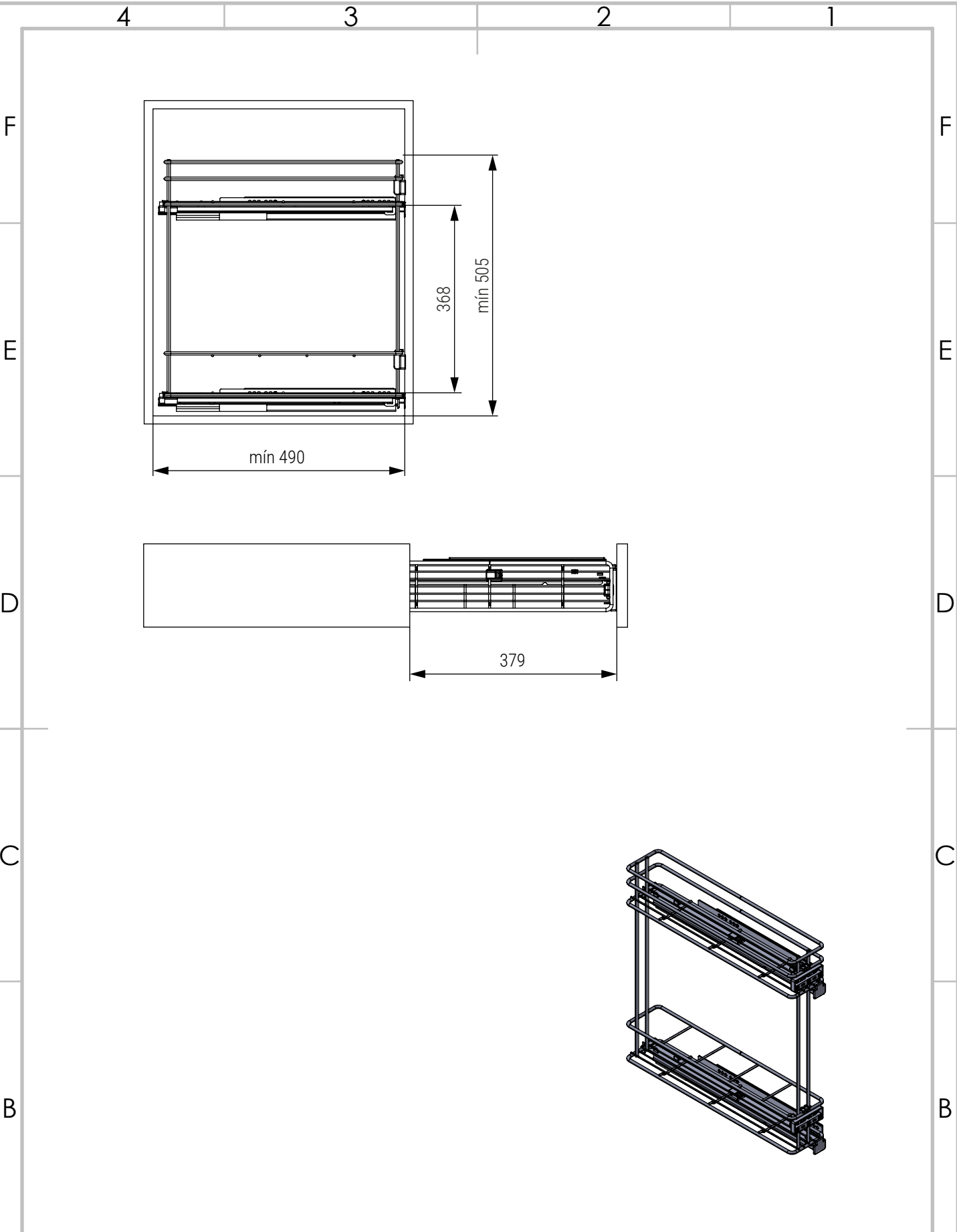
9



i Desmontaje | Dismount | Démontage







	NOMBRE	FIRMA	FECHA	DESCRIPCIÓN: Botellero CANDELA M150 CROMO C/GUIA Carga 25Kg SP 16-19
DIBUJ.	AG		29/09/2022	
VERIF.	AG			
APROB.				
FABR.				
CALID.				Unidades envase: 1 kit
				Unidades embalaje: 6 kit

Contigo desde 1893				Verdú ®	
Código	Material	Acabado	Modulo		
1008.2151	acero	cromado	M150		
1008.2152	acero	cromado	M200		
				A4	
ESCALA:1:10				HOJA 1 DE 1	

www.verdustore.com